

TRUE Waste Certification at Boston Scientific – Arden Hills

Arun Srinivasan

MnTAP Advisor: Matt Domski

Company Supervisor: Nicole Lancaster



UNIVERSITY OF MINNESOTA

Driven to DiscoverSM



UNIVERSITY OF MINNESOTA

Company Background



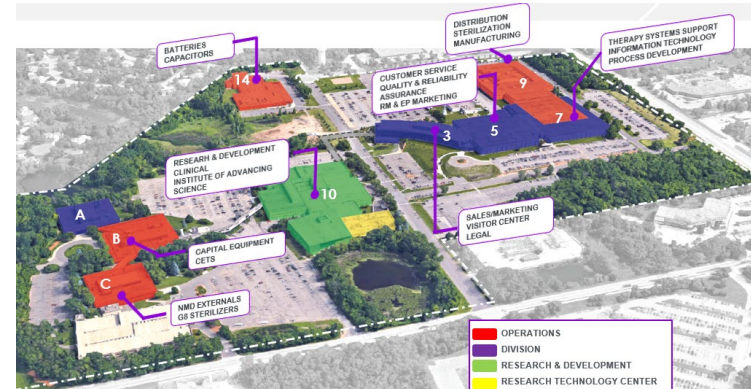
Boston Scientific – Arden Hills

•Medical Device Company

•Boston Scientific is dedicated to transforming lives through innovative medical solutions that improve the health of patients around the world.

•1.52M square foot facility

- ~60 production lines
- ~50 PD/R&D labs
- ~2,400 products made
- ~4,900 employees

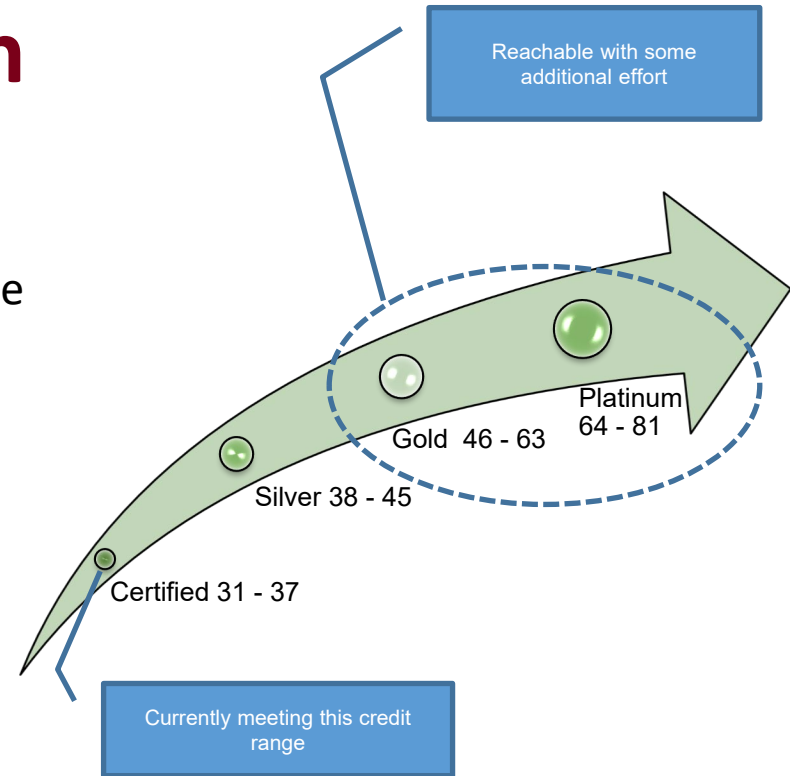


TRUE Waste Certification

TRUE (Total Resource Use and Efficiency) certification is a prestigious and comprehensive waste reduction program that aims to divert waste from landfills, incineration, and the environment while promoting sustainable practices.

Benefits:

- Environmentally responsible/sustainable
- Improves material flow
- Progress faster
- Potential cost savings



Incentives to Change

Empowering Waste Reduction through TRUE Waste Certification

- All BSC sites to achieve TRUE Waste certification by 2030
- Minimize waste to landfill
 - Diversion rate of at least 90%
- Reduce contamination level in trash to 10%
- Highest and best use of resource



[TRUE Zero Waste Certification: Re-thinking Resource Life Cycle - Facilities Management Insights \(facilitiesnet.com\)](https://www.facilitiesnet.com)

TRUE Waste Journey



Waste Audit and Data Gathering

- **Purpose: Waste Evaluation**
 - Evaluate waste streams for analysis
 - Identify instances of waste contamination
- **Methodology: Collection & Sorting**
 - Representatives from all site areas included
 - Collected and sorted 5 bags per stream
 - Weighed waste for assessment
- **Findings: Waste Analysis**
 - Analyzed 636 lbs of waste
 - Uncovered insights for targeted waste reduction
 - Recognized TRUE Waste certification credits from various Business Units (BUs) activities



Diversion rate

● Current: 65%

● TRUE Cert Min: 90%

Waste Reduction Assessments

Conducted comprehensive walkthroughs of Business units, cafeterias and town squares

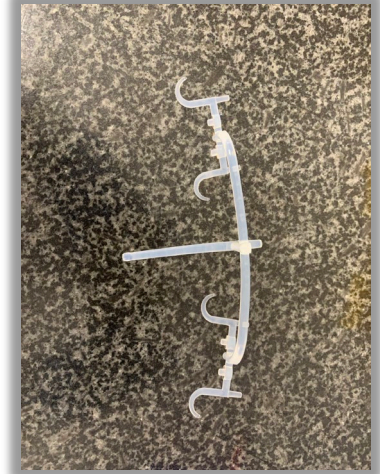
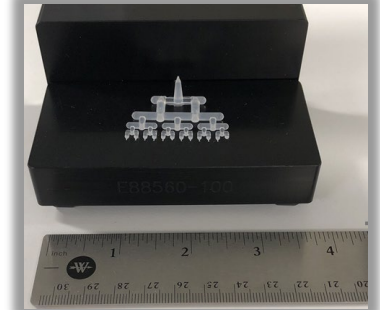
- Evaluated waste disposal bins & contents
- Assessed proper bin availability
- Documented diversion opportunities
- Progressed towards TRUE certification



Silicone Recycling

Action Plan:

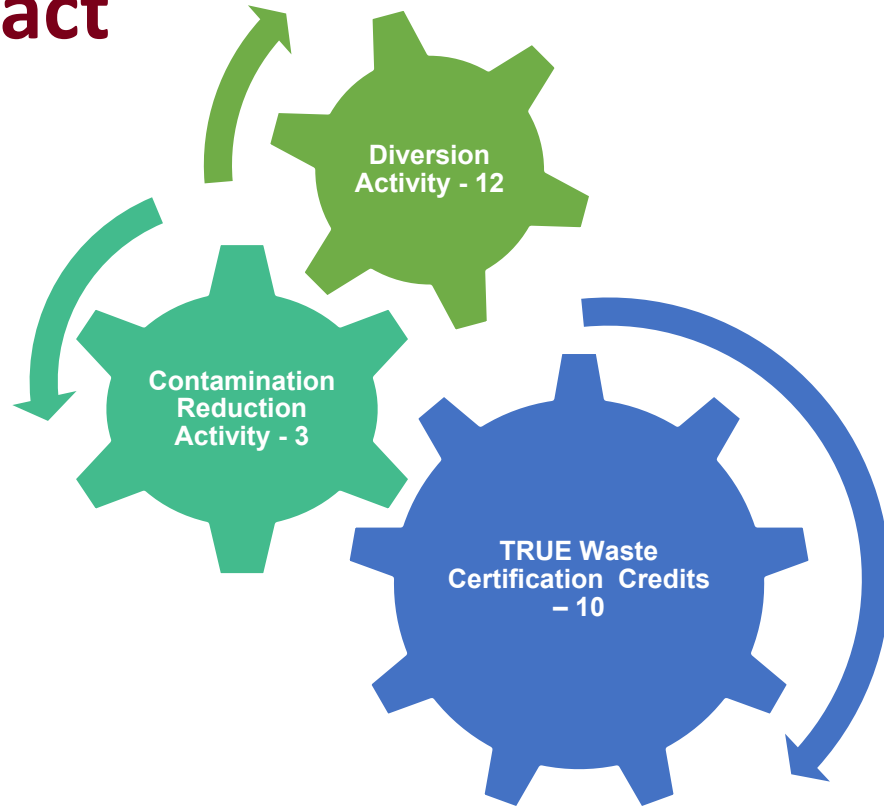
- Establish a silicone waste recycling process in Men's Health, that will contribute to the diversion rate
- Partner with Men's Health to understand types and volumes of silicone waste generated
- Collaborate with identified vendor(s) for options on recycling
- Evaluate if there's other opportunities for TRUE Waste credits
- Establish designated bins for silicone waste collection
- Incorporate the process into production work instructions
- Align with the appropriate stakeholders to establish logistics of the recyclable silicone material



Solutions

Recommendation	Annual reduction	Total cost	Annual savings	Payback period	Status
Recycle silicone	3,000 lbs	\$150	\$0	N/A	Implementing
Recycle KRT copper	2,100 lbs	\$100	\$2,900	< 1 month	Recommended
Reuse of bubble wrap	20 lbs	\$150	\$550	3.2 months	Recommended
Compostable lids in Cafe operations	360 lbs	\$2,500	\$0	N/A	Implementing
Paperless receipts only for cafe transactions	170 lbs	\$0	\$380	Immediate	Recommended
Office supply reuse stations	440 lbs	\$3,000	\$6,000	6 months	Recommended
Communication and training	28,000 lbs	\$5,000	TBD	TBD	Implementing

Overall Impact



Personal Benefits

- Skill Enhancement
- Project Management
- Professional Growth
- Networking Opportunities
- Leadership Potential
- Environmental Protection

