



# Food Waste Reduction and Recovery at Allina Health

Olivia D'Sousa

MnTAP Advisor: Jon Schroeder

On-site Advisor: Suzanne Savanick-Hansen



UNIVERSITY OF MINNESOTA

**Driven to Discover<sup>SM</sup>**

# Company Background

## Allina Health

- Located across Minnesota and Western Wisconsin
- 90+ clinics, 12 hospitals, 20 urgent care facilities
- Over 29,000 employees



Allina Health



[Unity Hospital & the North Suburban Hospital District](#) |  
[Mercy Hospital \(allinahealth.org\)](#)

# Incentives to Change

- **Allina's Climate Action Plan**

  - 50% diversion of waste from landfill by 2030

- **Reduce amount of excess food and its negative environmental effects**

- **Divert post-patient food waste**



[Sustainable Development Definition | Arena \(arenasolutions.com\)](https://arenasolutions.com)

# Nutrition services

- **Cafeteria**

- Serves staff and guests
- Offers to-go or dine in services

- **At-your-request (AYR)**

- Meal delivery to patient rooms
- 6:30am-6:30pm



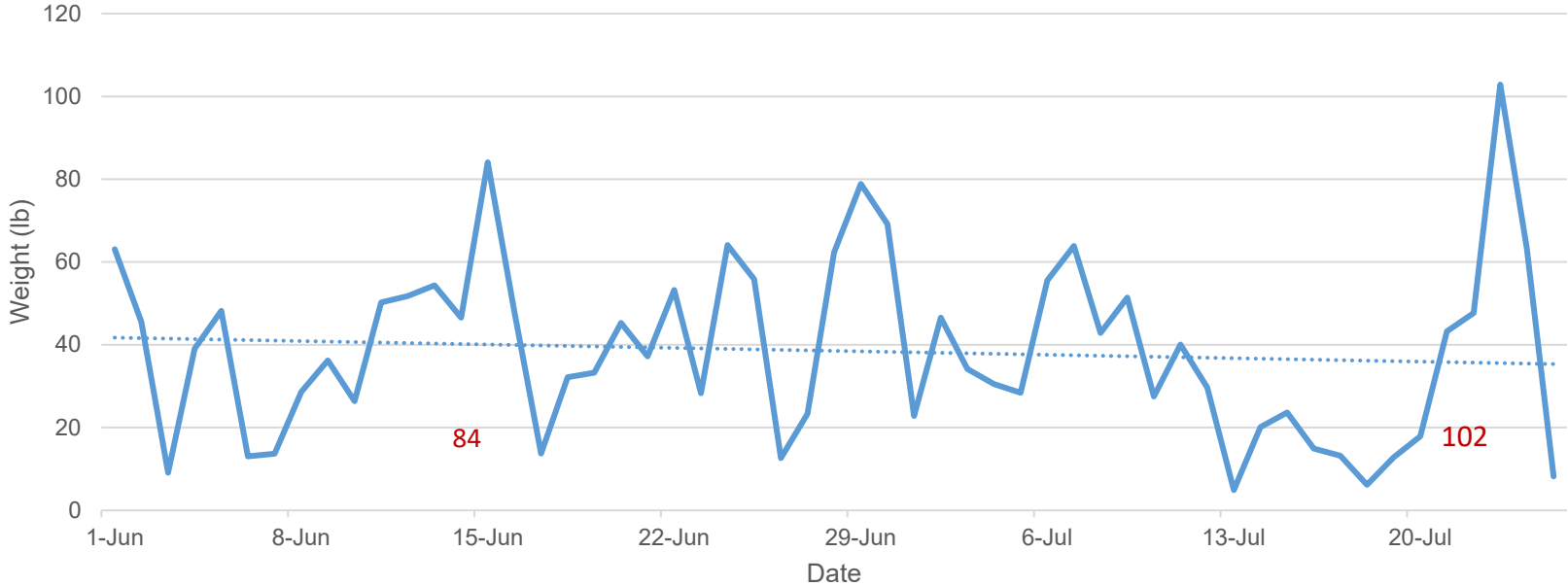
# Excess Food Reduction Strategies

- **Using first-in, first-out method**
  - Utilizes oldest food first
  - Prevents spoilage
- **Tracking overproduction**
  - Lean Path- technology with a scale that logs:
    - Weight of food
    - Type of food
    - Where it's from in the kitchen
    - Reason it's thrown away



[Food Waste Solutions » Leanpath Food Waste Prevention Solutions](#)

# Food overproduction



# Recommendation 1: Reduce Production

- **Use hospital admittance numbers to estimate demand**

- Produce less food when there are less patients
- Prepare more food when closer to capacity

- **Make-to-order**

- Example: grill 7-10 burgers at the start of lunch instead of 20 for the entire meal period
- Exhaust supply in last 30-60 minutes and make more only when ordered
- Ensure fresher food and reduce excess



[Food Waste Reduction | Broome County \(gobroomecounty.com\)](http://gobroomecounty.com)

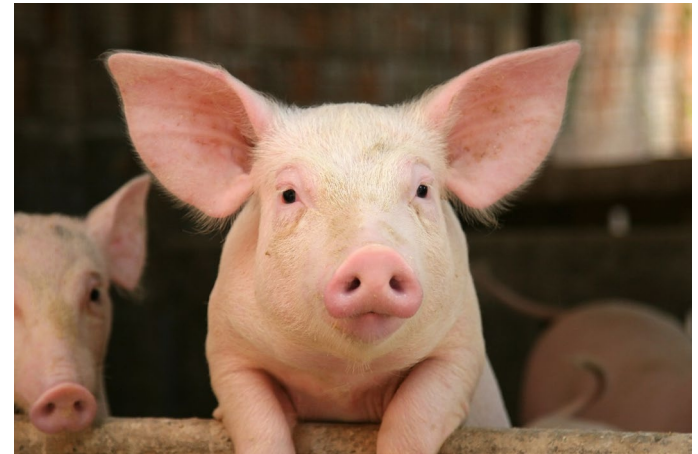
# Recommendation 2: Food-to-hogs

- **Capture remaining waste**

- Divert leftovers from patient plates
- Ensure kitchen sends no food to landfill

- **Follow other hospitals' systems**

- United Hospital
- United Hospital Hastings- Regina Campus
- Abbott Northwestern Hospital
- St Francis Regional Medical Center
- Mercy Hospital





# Recommendation 2: Food-to-hogs

- Source separation training is crucial
- Transport food to Barthold Farms
- Saves money



# Table of Solutions

Recommendation	Annual reduction	Annual cost	Annual savings	Payback period	Status
Make-to-order cafeteria and AYR foods	Up to 8 tons	TBD	Up to \$28,000	Immediate	Recommended
Food donation- MealConnect	TBD	\$0	N/A	N/A	Recommended
Divert post-consumer food waste from landfill to hogs	19 tons	\$0	\$470	Immediate	Recommended
Compost-to-community gardens during summer months	390 lb.	\$0	\$0	Immediate	Recommended
Divert recyclables to recycling (paper, plastic, cardboard)	2.8 tons	\$0	TBD	Immediate	Recommended

# Personal Benefits

- Developed experience in project leadership
- Made connections
- Gained a deeper understanding of the problem of food waste

